



HILL COUNTY ELECTRIC NEWS & VIEWS

March 2022



1.877.394.7804
hillcountyelectric.coop



Craig Gates
General Manager/CEO

March CEO Message

In previous magazines, HCE has provided information on Demand Rate/Metering. For informational purposes, HCE is going to start displaying a kW Demand component on your monthly bill. It will appear side by side with your Monthly Usage if you are a Residential, Annual or Small Commercial account.

the demand is reset to zero and the meter starts over, recording the highest 15-minute average for the next billing period. The kW demand line item that will appear on your monthly bill represents the 15-minute interval with the highest amount of electricity used during that billing month – measured in kilowatts (kW).

What is Demand?

Simply put, **energy** is the amount of power you consume, while **demand** measures your impact on the grid to deliver that power. Demand refers to the maximum amount of electrical power that is being consumed at a given time, as opposed to energy which is the amount of power used over a period of time.

Example – Energy (kWh) would be what is recorded on your car’s odometer (total miles). Demand is like your speedometer – measuring the speed at which energy flows. The demand charge is your highest recorded “miles-per-hour” speed that month.

How is it calculated?

The meter monitors demand over a 15-minute period. The meter records the highest 15-minute average that occurs each month. At the end of every billing period,

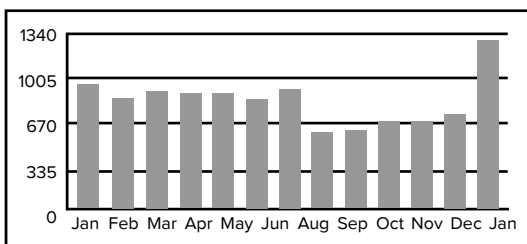
What is included in the Detail of Charges on my bill?

Monthly Recurring Charge (also called a base charge) - Designed to recover monthly costs associated with running the Cooperative. Included but not limited to, administration, metering, billing, and customer accounting. It also includes a portion of the distribution plant costs to recover for the poles and wires that bring power to you the member.

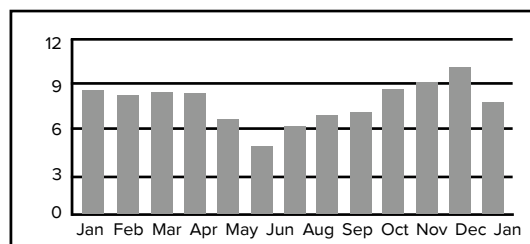
kWh Charges - We break your bill into two kWh charges called Delivery and Energy.

Delivery Charge - This charge covers the additional investments of meters, wires, poles, transformers, property taxes, substations, and other items needed to provide the electricity. It is also used to help recover maintenance cost.

Energy kWh Charge - It is used to recover the cost of energy purchased by the Cooperative to serve its members' energy requirements.



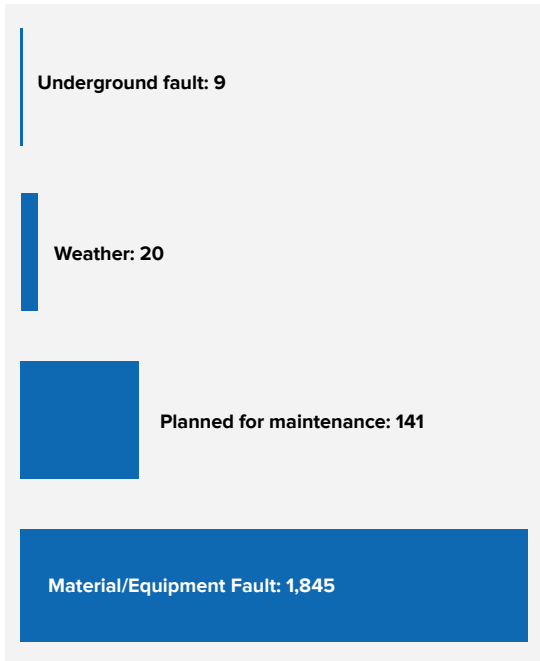
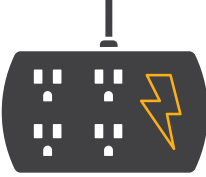
Monthly Usage



Demand

HCE Happenings

Last month, Hill County Electric (HCE) had approximately 2,041 account hours affected by outages. Of these hours:

SURGE PROTECTION

Keep your electronic equipment safe.

A power surge is typically caused by lightning, changes in electrical loads, faulty wiring or damaged power lines. Install power strips with surge protection to protect sensitive equipment.

- Easy to use (just plug them in)
- Protect electronics plugged into the device
- Must be replaced over time or after a major surge event

REMEMBER:
Not all power strips offer surge protection. Carefully read the packaging labels when purchasing.

Plant Trees Safely

Before you dig, call 811 to locate buried utility lines.

LOW TREE ZONE

Avoid planting within 20 ft. of power lines. If planting is unavoidable, only plant shrubs and small trees that reach a mature height of 15 ft. or less.

MEDIUM TREE ZONE

Plant medium trees (under 40 ft. when mature) at least 25 ft. away from power lines.

LARGE TREE ZONE

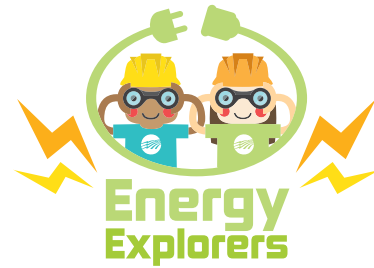
Plant large trees (over 40 ft. when mature) at least 50 ft. away from power lines.



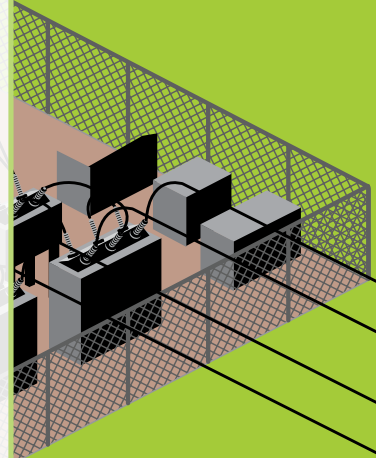
ELECTRICAL EQUIPMENT WORD SEARCH

Did you know we use a variety of equipment to send electricity to your home?

Read the facts below to learn about the equipment we use, then find and circle the **bolded** words in the puzzle below.



C	Y	F	S	S	B	U	R	U	X	S	Z	P	Z	S
T	U	R	S	O	E	Q	N	S	G	E	W	S	E	K
N	H	Z	T	B	V	N	Z	E	B	F	U	S	K	C
Z	N	B	Z	R	S	M	I	K	Y	X	U	I	J	U
E	J	A	D	K	X	Z	T	L	Z	S	E	E	E	R
S	G	L	F	Y	M	O	G	I	R	E	N	C	O	T
V	Z	Q	O	W	K	V	D	C	H	E	U	K	O	T
U	S	C	T	A	S	W	J	I	E	O	W	B	H	E
S	N	O	I	T	A	T	S	B	U	S	E	O	X	K
X	S	R	E	M	R	O	F	S	N	A	R	T	P	C
E	L	E	C	T	R	I	C	M	E	T	E	R	S	U
Y	B	G	V	H	U	N	P	D	L	K	C	R	R	B
B	L	P	T	G	I	F	N	Z	T	S	M	B	G	E
U	H	U	J	Y	Z	L	K	A	S	L	H	H	E	C
Z	B	R	I	Y	Q	I	U	J	M	F	H	Z	D	R



- **Transformers** look like large metal cans on top of utility poles or big green boxes on the ground. They reduce the voltage of electricity for safe use in your home.
- **Power lines** hang overhead or are placed underground to carry electricity from where it's generated to homes and businesses.
- Lineworkers use **bucket trucks** to reach power lines and poles when making repairs and updates to the electrical system.
- **Electric meters** are placed on the outside of homes to measure the amount of electricity you use.
- **Substations** are facilities that contain equipment to help control the flow of electricity.

SWAP AND SHOP

Welcome to our Swap and Shop! Feel free to post and find classifieds from other members!

Check out the current version online at www.hcelectric.com/swap-and-shop.

Ads submitted online are usually added within 2 to 3 business days. Due to print deadlines and space available, some ads may appear in the next magazine.

*Indicates photo available on our website version.

Country Home For Sale

3.5 acres, 5 Bedroom, 2 bath home with attached 2 car garage and 40'x40' studio fully contained, two outbuildings and close to town. Call 406.395.5915 or 406.390.1575 for more details and pricing.

Well Water Treatment System

EcoSmarte clean well water system. Brand new in box, ready to install. Call 406.395.5915 or 406.390.1575 for more information.

Antique Air Compressor

Works well, call 406.395.5915 or 406.390.1575 for more information.

Log & Antler Benches

Beautiful log and antler deck furniture, 2 benches. Call 406.395.5915 or 406.390.1575 for more information and pricing.

Hot Glass Equipment for Beadmaking

Complete hot glass equipment for beadmaking, both Pyrex and Morittie. Call 406.395.5915 or 406.390.1575 for more information.

Looking For Singer Featherweight*

White Singer featherweight 221/221k with attachments, call 406-357-8701.

Sioux Hardseat Facer and Valve Grinder

Asking \$1,500. Call 406.262.3050.

Property and Business For Sale

Opportunity for some interested in antiques and second-hand merchandise. Two-bedroom home and one-room schoolhouse plus original GN depot and two storage buildings. Located on four lots (130x150) total along Hwy 87 between Havre and Great Falls. Sold as-is with all remaining contents and fixtures. Good hunting and fishing area. Call 406.739.4361 for more details.

Bissel Cleaner

Bissel Cleaner new in box. Purchased for \$277.00, asking \$200.00. Call 406.262.3050.

Wanted 55 to 59 Chevy

Wanting to buy a '55 to '59 1/2-ton Chevy or GMC pickup, running or not. Call 406.326.2287.

Collectibles For Sale

"White" Treadle sewing machine with beautiful cabinet, swivel drawers, and changes out machine accessories. Delaval Cream Separator model #514, an electric motor has been added but also has original hand crank. Stainless steel bowl holds about 3 gallons of milk. Can adjust the thickness of cream. In good condition, call 406.663.2108.

Napa Collector's 1993 Toys

Collection includes Semi-Truck and Tractor-Trailer; Jeep and boat; Sound Machine Pickup; Semi-Truck trailer; Sound Machine Semi-Trailer. All in original collector boxes. Call 406.262.3392 for more information and pricing.

Antiques and Collectibles

Antiques and Collectibles from the past for sale December 4th & 5th at Hwy 87 and 4th Ave in Loma from 10:00 am to 4:00 pm. Dolls (large & small), 1940's and newer marbles, 1950's cigarette lighters, post card collection, records (78's, 45's & 33's), matchbook collection, jewelry (1940's to 90's), glassware and silverware, all genres of books, magazines and newspapers. There will also be old light fixtures and lamps, radios and record players, antlers, tools, furniture and more. For more information call 406.739.4361.

Pool Table

Choose between 1 of 2 full-size pool tables. Your best offer please and you haul. Call 406.566.2510 afternoons to see the tables.

Looking For

Looking for an older model Chevy Pickup with a 6-cylinder motor that runs, preferably a 2WD. Also looking for a 292 Chevy that runs. Call 406.932.4748.

Swap & Shop is a classified advertising section of the Triangle Communications and Hill County Electric websites and newsletters. It is maintained as a service to customers and communities wanting to buy, sell and announce non-commercial items. To have an ad included, simply enter all the pertinent information on the online form. An administrator will review the information within two business days and if approved, the ad will then appear. It will stay online for 60 days unless you notify us to remove or change it. It will also appear in any of the newsletters printed during that 60 day window. Triangle reserves the right to abbreviate ads and if the section is full, we will display ads on a first come, first-served basis. If you're unable to enter your ad online you may mail or e-mail it to us using the contact info inside the front cover of this magazine. Happy swapping and shopping.