



HILL COUNTY ELECTRIC NEWS & VIEWS

January 2022



1.877.394.7804  
hillcountyelectric.coop



Craig Gates
General Manager/CEO

January CEO Message

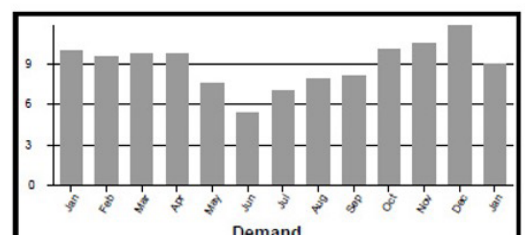
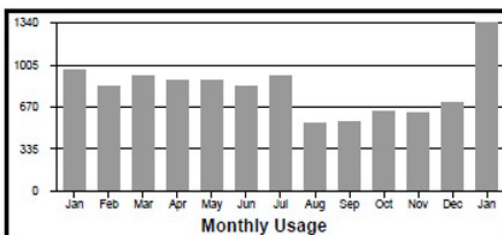
In this month's message I would like to discuss kW demand and energy. I covered this topic in previous newsletters, but now you should be seeing graphs on your bill statements showing monthly usage and kW demand, so I wanted to review these topics.

Energy and demand are two separate things. Energy is the amount of power you consume; it is the amount of electricity used over a period of time and you would see it on your bill as a kWh or kilowatt- hour. Demand measures the maximum amount of electrical power consumed at a given time.

How is demand calculated? Your meter monitors demand over a 15-minute time frame and records the highest 15-minute average that occurs each month.

Demand is reset at the end of every billing cycle and the meter starts over for the next billing period. The demand line item on your monthly bill represents the 15-minute interval with the highest amount of electricity, measured in kilowatts (kW), used during the billing month. You should see two graphs on your bill statement similar to the ones shown below. These charts give you some insight into how you consume electricity.

- **The Monthly Usage Chart** shows the kWh usage for the past 12 months.
- **The Demand Usage Chart** refers to the maximum amount of electrical power being consumed at a given 15-minute period for the month as opposed to energy, which is the amount of power consumed over the monthly billing period.



HCE Happenings

Last month, Hill County Electric (HCE) had approximately **4,325** account hours affected by outages. Of these hours:

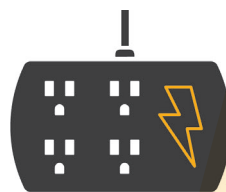
Weather: 4077

Power Supply: 122

Material/Equipment fault or failure: 65

Planned Maintenance/Outages: 60

Public Caused: 1



SURGE PROTECTION

Keep your electronic equipment safe.

A power surge is typically caused by lightning, changes in electrical loads, faulty wiring or damaged power lines.

Install power strips with surge protection to protect sensitive equipment.

- Easy to use (just plug them in)
- Protect electronics plugged into the device
- Must be replaced over time or after a major surge event

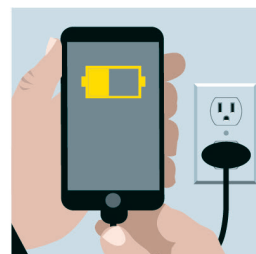
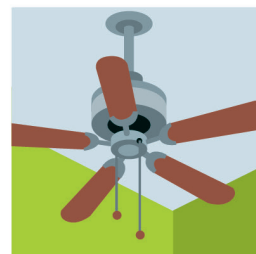
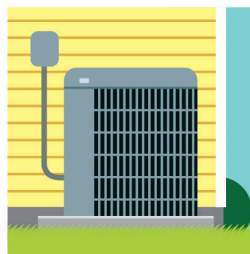
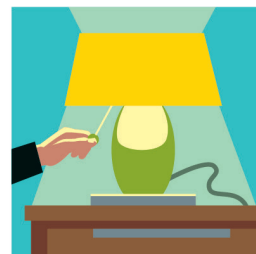


REMEMBER

Not all power strips offer surge protection. Carefully read the packaging labels when purchasing.

We're Proud to Power YOU.

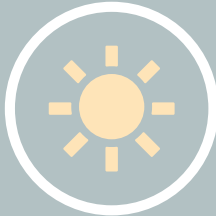
Local, Safe, Reliable Electricity.
For all the ways you live.



Space Heater Safety Tips

Space heaters are a great way to warm specific rooms in your home without having to crank up the thermostat, but using space heaters doesn't come without risk! Use the tips below to keep your home safe.

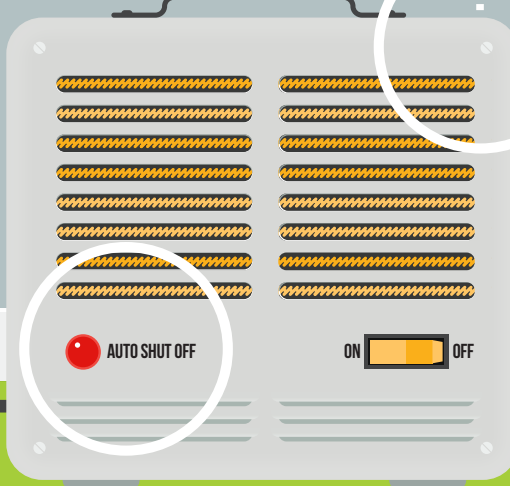
DO: Plug your space heater directly into the wall outlet.



DO: Keep your space heater in low-moisture rooms.

DO: Keep your space heater at a safe distance (at least 3 feet) from kids, pets and flammable items.

DO: Buy a unit with an automatic shutoff in case the unit tips over, or you forget to shut it off.



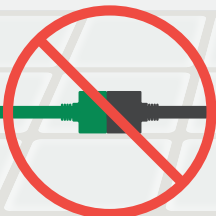
DO: Always follow the directions and take a broken space heater to a qualified appliance service center.



DON'T: Leave your space heater unattended. Always unplug it before you leave the house or go to bed.



DON'T: Use an extension cord to plug in your space heater. It can cause the heater to over-heat, and can be a tripping hazard.



DON'T: Place your space heater near curtains, clothing, furniture or bedding.



DON'T: Try to repair a broken space heater yourself.



DON'T: Put your space heater in your bathroom. The moisture can damage the unit, which could cause it to malfunction.



Swap and Shop

Welcome to our Swap and Shop! Feel free to post and find classifieds from other members!

Check out the current version online at www.hcelectric.com/swap-and-shop. Ads submitted online are usually added within 2 to 3 business days. Due to print deadlines and space available, some ads may appear in the next magazine.

Farm Equipment For Sale

1985 Versatile 5000 blade, 35.5 ft. Asking \$2,500, call 406.378.3212.

Misc. Items For Sale

CIH 9280, 5500 hrs, very good 24.5-32 tires. CIH 1680 Combine 4500 hrs, very good 30.5-32 tires. CIH SRX 160 Sprayer with 1600 Gallon tank, 134' booms, 10x70 swing away auger. Call 406.398.5593 or 406.265.0937.

Don Greytak Print*

Don Greytak picture with 12 farm pictures. Asking \$100, call 406.292.3680.

John Deere Single Hitch*

John Deere Single hitch for 9400 or 9450 Grain Drill. Asking \$200, call 406.292.3680.

Cosco Portable Pack & Play*

Pack & Play 29"x39", asking \$25.00. Call 406.292.3680.

Restorable Vehicles

Many older model restorable vehicles. Call 406.395.4611 to view.

Miscellaneous Household Items

Monarch electric and wood cook stove, solid teak wood dining table and chairs with casters, old banjo (needs tuning) and heavy water heat radiators (2) 6 footers and (1) 3-footer. Call 406.395.4611.

Boat and Motors for Sale

11-foot aluminum boat with 2 outboard motors, a 6hp two-stroke outboard motor, and a 2 hp two-stroke outboard motor. Includes fuel tank and oars. Best offer, call 406.669.3333 (no texts, landline only please).

2001 Chevrolet Silverado

2001 Chevrolet Silverado 1500 Extended Cab, 132,000 miles. Very good condition, call 406.398.5330 for pricing.

Dutchman 5th Wheel Toy Hauler

Two slides, generator, microwave, roof air, 10-foot walled-off garage with tie-down rails and awning. Turn key with dishes, silverware, pots and pans, and some blankets. Stored inside, non-smoking and very clean older owners. Or without any extras. Asking \$28,900 offers or will possibly consider trades. Call 406.265.0990.

1985 Versatile Blade

1985 Versatile 5000 blade, 35.5 ft. Asking \$2,500, call 406.378.3212.

Misc Items For Sale

Weight Bench with weights, \$300; Older piano; Bull Frog Hot Tub (needs repair), \$200. Call 406.378.3212.

Tin Lizzie Sewing Machine

Tin Lizzie 18 Long arm sewing machine and 10-foot Gracie frame, \$5500 or best offer. Call 406.292.3663.

Steel Headache Rack

Monarch electric and wood cook stove, solid teak wood dining table and chairs with casters, old banjo needs tuning and heavy and (2) six foot heavy water heat radiators and (1) three foot. Call 406.395.4611.

RYOBI Miter Saw*

10" RYOBI Compound Miter saw in excellent shape. Call 406.759.5551.

Exhaust System

Unused and complete exhaust system. Stainless steel, fits 1994 Chevy Duramax 2500 Crew Cab long box. Like new and one continuous piece. Please call to make appointment to see and ask questions, 406.390.3522. Offers desired.

Church Organs

One Lowry Organ and one Kawai Organ. In good shape and play well. Buyer must pick up and haul away. It's yours free, just want to get them out of the church. Call 406.366.4625.

Gas Dryer and Snow Blower

Gas dryer, \$100 and a large snow blower, \$700. Call 406.395.4581.

Wanting to Buy

410 Shotguns and Remington BDL rifles. Call 406.326.2287.

Wanting to Buy

Looking to buy a 360 or 390 motor for a Ford pickup. Call 406.301.4035.

**Indicates photo available on our website version.*

Swap & Shop is a classified advertising section of the Triangle Communications and Hill County Electric websites and newsletters. It is maintained as a service to customers and communities wanting to buy, sell and announce non-commercial items. To have an ad included, simply enter all the pertinent information on the online form. An administrator will review the information within two business days and if approved, the ad will then appear. It will stay online for 60 days unless you notify us to remove or change it. It will also appear in any of the newsletters printed during that 60 day window. Triangle reserves the right to abbreviate ads and if the section is full, we will display ads on a first come, first-served basis. If you're unable to enter your ad online you may mail or e-mail it to us using the contact info inside the front cover of this magazine. Happy swapping and shopping.