



# HILL COUNTY ELECTRIC NEWS & VIEWS

June 2023



1.877.394.7804    
hillcountyelectric.coop

## Preparing to Serve You Better



Craig Gates  
General Manager/CEO

Providing reliable power to our members is and will always be the top priority for Hill County Electric (HCE). These days, power reliability seems to be making news now more than ever. As the energy industry continues to transition and more segments of the economy are becoming electrified, such as vehicles, machinery and

even lawn equipment, additional pressures are being placed on our nation's electric grid.

Although it may seem counterintuitive, we also maintain power reliability through planned, controlled outages. By carefully cutting power to one part of our local area for a few hours, HCE can perform system repairs and upgrades, which ultimately improve electric service. Planned outages can also be used to balance energy demand, but only in rare circumstances. Rest assured, we will make every effort to notify you in advance of a planned outage, so make sure

we have your correct contact information on file to receive the latest emails or texts.

With summer storm season upon us, I thought it would be a good time to tell you about a few measures we're taking to ensure you continue receiving the reliable power you depend on and deserve. As advancements become more accessible and costs drop, we anticipate using additional technologies to ensure a consistent energy supply while managing the environment. I encourage you to follow HCE on social media so you can learn about the latest co-op updates.

The safety of members and the safety of our linemen and all our employees is always #1.

## Practice Storm Safety

Have a plan in place and make a storm kit.

Listen to local alerts and know where to shelter.

Stay off the roads if trees and power lines are down.



**HCE SCHOLARSHIP WINNERS**

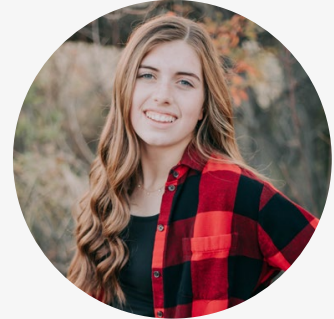
*Congratulations to all our scholarship winners!*



**Lance Rutledge** was awarded the \$1,000 Basin Electric Member Dependent Scholarship.



**Bree Swanson** was selected for the \$500 MECA Memorial Scholarship.



**Angela Sant** was awarded \$500 as the runner up for the Basin Member Dependent Scholarship and also received a \$500 MECA Memorial Scholarship.

**NON-TRADITIONAL SCHOLARSHIP PROGRAM**

Hill County Electric (HCE) recognizes that getting a job and staying competitive in the workplace involves showing employers you have the skills and experience to get the job done. Returning to or starting college is a must in many cases. This is why HCE is proud to offer up to two \$1,000 scholarships per year to adult learners returning to college for education training to improve their career opportunities.

**Application criteria:**

- Must receive HCE electrical service at home address.
- Be pursuing training in a certified trade, professional or technical program or a two-year or four-year degree program.
- Must be 25 years or older.
- **Deadline to apply is July 1st.**

Visit us online at

[www.hcelectric.com/community/scholarships](http://www.hcelectric.com/community/scholarships) for more information on the scholarships HCE offers.

**Dig Smart. Dig Safe.**

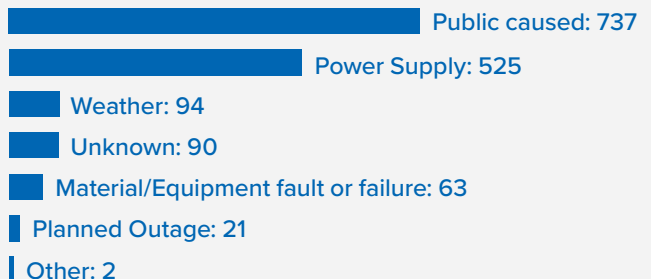
Before you dig, call 811 or visit [call811.com](http://call811.com) to mark underground utility lines. 811 is a free service that helps keep our community safe.



**April is National Safe Digging Month.**

*HCE Happenings*

Last month, Hill County Electric (HCE) had approximately **1,532** account hours affected by outages. Of these hours:



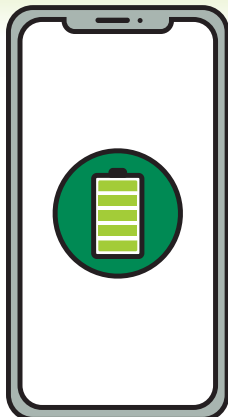
# ELECTRONICS EFFICIENCY WORD SEARCH

Did you know there are ways you can reduce your electronics energy use?

Read the energy-saving tips below, then find and circle the **bolded** words in the puzzle.



B J C M G S N A M O R S W U L  
 R A F O D V T L L P D I O S W  
 E B T E M V C E U X S Y W D G  
 C B P T D P O W E R S T R I P  
 H Y G M E T U A U Y H Z P U Z  
 A R P Q E R U T L R N Z N U Y  
 R F I H L V I C E Q V P C E S  
 G T D F F W K E M R L B N H O  
 E B H W C F Q W S U K Y N Z M  
 A Q I L I F K N G L O I K B A  
 B S R E G R A H C E N O H P C  
 L N O Y O V I M A I V I R X T  
 E V S U A I L K O L U Y N F C  
 Y H V K S L F G T R I P B T G  
 P O W E R M A N A G E M E N T



- Use a **power strip** with an on/off switch when powering multiple electronics to easily manage energy use.
- For devices that require **batteries**, use **rechargeable** ones, which are more cost-effective and environmentally friendly.
- **Unplug** electronic products that consume energy even when they're not in use, like **phone chargers**.
- Use the sleep or **power management** mode on your **computer** to save on energy costs.

# Swap and Shop

Welcome to our Swap and Shop! Feel free to post and find classifieds from other members.

Ads submitted online are usually added within 2 to 3 business days. Due to print deadlines and space available, some ads may appear in the next month's magazine.

## Hot Water Radiator For Sale\*

Hot water radiator, under window size on legs. Asking \$100. Call 540.624.0502.

## Farm Sink For Sale\*

Double basin, double drain farm sink, 66" long, white porcelain over steel. Sears steel cabinets included. \$600 or best offer. Call 540.624.0502.

## Walker Bay Dinghy

10ft. Walker Bay rigid dinghy with inflatable tubes (non-sinkable). Includes 6 hp., long shaft, 4 cycle Mercury motor (less than 100 hrs.), trailer, life jackets, anchor and oars. \$2,000. Call 406.547.2184.

## Ford F250 Box For Sale

A box for a 2020 Ford F250. It has been rhino lined, in excellent condition, white in color. Asking \$600 or reasonable offer. B&W turnover ball, will deal. For more information call 406.669.3183.

## Culvert For Sale

Galvanized steel culvert, 12" diameter, 14' long, never used, \$225. Call 406.547.2184.

## Cooper Discovery Tires For Sale\*

Four Cooper Discovery 245/60R20 with about 7,000 miles.

## Professional Candle-Making Equipment

Includes everything needed to make candles, wicks, dyes, scents, additives, etc. Include tall metal molds that are different shapes and short round molds. Approximately 10 molds and instructions, too many more items to list. Asking \$300, or best offer. You pick up, one large plastic tote and a smaller box. Call 406.622.5170, please leave a message if no answer.

## Tractors and Machinery For Sale

1956 IHC 350 utility with loader and 3 pt blade; 1976 986 with loader and blade; 1972 4166 with duals; Ditch Witch trencher with backhoe trailer and extra parts; 1972 IHC 1700 16ft box and hoist 404; 1969 IHC 1750 16ft box & hoist 392; 1970 New Holland 1048 stacker; 1978 IHC 1460 24ft header; 1970 Case 30 ft cultivator; 1970 Geyser 24ft cultivator. As is condition, make offer. Call evenings 406.781.4245 or 406.739.4361.

## Mazama Luxury Touring Tires

4 new tires off a 2023 Chrysler 300 with less than 300 miles on them. Size 215/65 R17 99H, tires are siped. Bought at Les Schwab, saved for new car but didn't fit cross posted. Pick-up and delivery options can be discussed. Paid \$1,000, asking \$650. Contact Allan or Kathleen at 406.945.0705 or 406.265.6839.

## Lowry Holiday Organ and Banquet Tables

The Stanford Presbyterian Church has a Lowry Holiday Organ to get rid or give a donation to the church. Also available are five 8-foot banquet tables for sale; \$10 each. Call Rose at 406.366.4625 for more information.

## Nosler .45 ACP 185 grain HP Custom Competition Reloading Bullets\*

Nosler .45 ACP 185 grain HP Custom Competition reloading bullets. 250 per box, asking \$70 (about 3000 bullets available). Call 406.669.3200 (located west of Billings area).

## Looking For Burn Barrel

Wanting to purchase a burn barrel. Call 1-480-669-4258.

## 1951 Ford 3/4 Ton Pickup

Ford F250 truck with flatbed. Has a good motor, new radiator and new battery. In good shape, call 406.301.4035.

## Car Dolly

Heavy duty car dolly with new tires and wheels, Dexter axle, electric brakes, \$400. Call 406.547.2184.

## Feandrea Cat Condo\*

Condo is 33" high, like new for large cats up to 16 pounds. Light gray with a large top perch, 22"x15.7". Removable and washable top pad. Asking \$55, cash. Call 406.355.4204.

*\*Photos available on our website version of the Swap & Shop ([www.itstriangle.com/swap-and-shop](http://www.itstriangle.com/swap-and-shop))*

*Swap & Shop is a classified advertising section of the Triangle Communications and Hill County Electric websites and newsletters. It is maintained as a service to customers and communities wanting to buy, sell and announce non-commercial items. To have an ad included, simply enter all the pertinent information on the online form. An administrator will review the information within two business days and if approved, the ad will then appear. It will stay online for 60 days unless you notify us to remove or change it. It will also appear in any of the newsletters printed during that 60 day window. Triangle reserves the right to abbreviate ads and if the section is full, we will display ads on a first come, first-served basis. If you're unable to enter your ad online you may mail or e-mail it to us using the contact info inside the front cover of this magazine. Happy swapping and shopping.*